

Fanta

Costume Design

&

Art Direction

Maleen Nökel



Design Concept

15 April 2009

Children love DJ BOBO shows and adults become children, so the idea came to me to create a fairytale world a kingdom of fairies and gnomes.

This time I wanted to use the budget for one theme only, allowing being more extravagant and create structured costumes with body in armors. The second theme not everyone needs to change, apart from DJBOBO and Nancy off course, but this in a transformation by adding and changing a few pieces. For the basic materials to form volume and shapes will try various light materials suitable for resistance and sweat otherwise we will be using raw leather as basic material which we paint making it easier for the different thicknesses we need for outfit, headgears and shoes all to be manufactured to match perfectly. To this, light fabric materials are added and some natural particles. want it to be very colorful and shine by combining with shades of gold for the metallic armor pieces

Costumes

DJ BOBO, he is the King Gnome as usual we recognize him as himself and I want him to stand out in white with some grenadine red as color of love which will be the pendant to his wife the queen

Singers:

Nancy, she is the sexy Queen Fairy, opposite colors grenadine and white
Tone as main singer the Imperial Guardian Gnome

Claire is the Muse of Love Fairy embodied in a sexy *Peacock* being a gracious animal

If we will have Jane as additional singer she will be the Mother of Eden (Jane wants her body to be well covered)

Lead Dancers:

Curtis is the Messenger of Love embodied in a *Bird*

Renick is the Love Warrior

Female Dancer #1 is the Butterfly Fairy

Male Dancer #1 is the Dragon Fly Gnome
Female Dancer #2 is the Tree Fairy
Male Dancer #2 is the Tree Gnome
Female Dancer #3 is the Eros Fairy
Male Dancer #3 is the Eros Gnome
Female Dancer #4 is the Water Fairy
Male Dancer #4 is the Water Gnome

Musicians

For the musicians I think we can find plain pieces among what we have in our costume stock white and black based, dye some of them in gold add gold applications including music instrument accessories

Drummers:

The drummers I suggest to dress in black shirt and pants since the drums already are colorful with gold and manufacture the sticks and shoulder bands decoratively so that the bodies disappear behind the instruments and moving drum sticks.

Face gear, Hair & Make-up

Face Prosthetics

Face prosthetics we need for fairy and gnome Ears. We will have to make prosthetics in different length and shapes; DJ BOBO very small, almost not to be g Y Y b U b X B U b W m U g k Y z h Y c h Y f g X Y d Y b X b [shape of face and body.

The Hair I would like to be long for all Singers and Dancers men and women the colors I designed matching to the costumes we probably will need wigs for all (except our Japanese dancer). For Renick and Curtis I designed a head gear, F Y b] W W Y g] Z g h c h \] b U b X c b [z 7 i f h] g N V c X m U b X

Make-up soft and discrete.

Costume Designs

Theme 1

Singers

DJ BOBO King



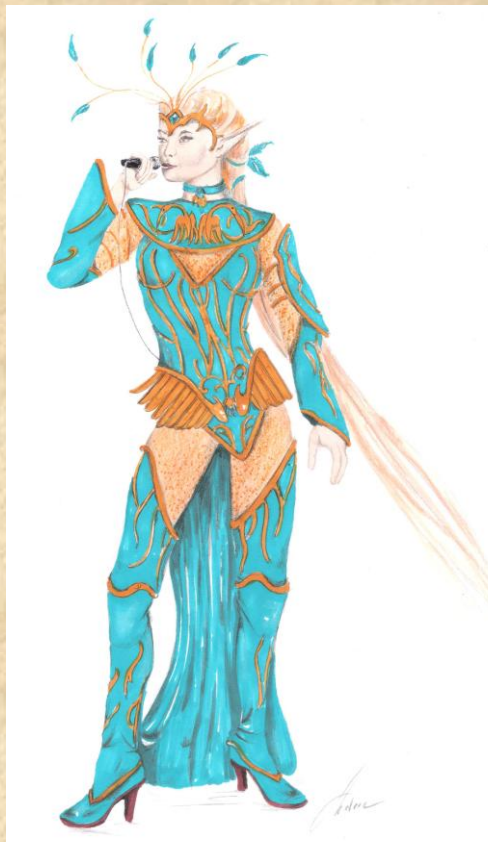
Queen



Imperial Guardian



Muse of Love



Mother of Eden

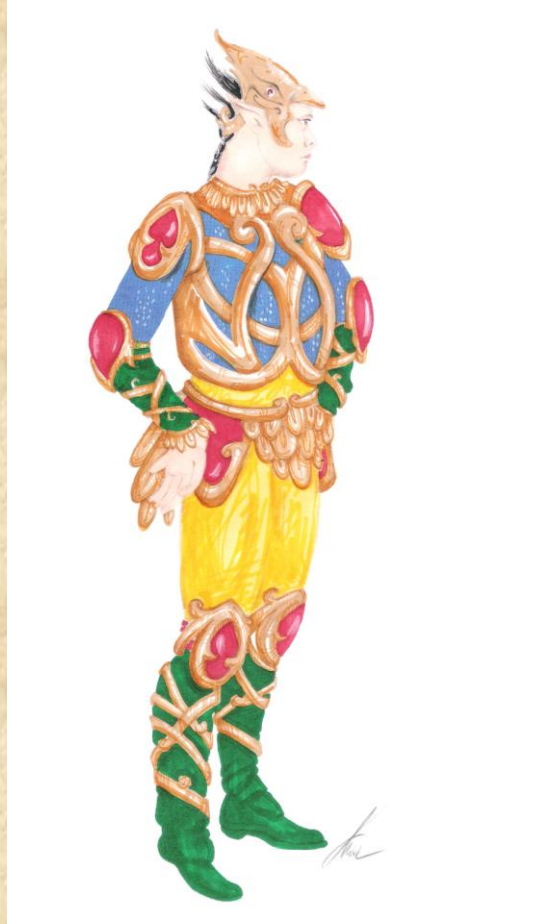


Dancers

Messenger of Love



Love Warrior



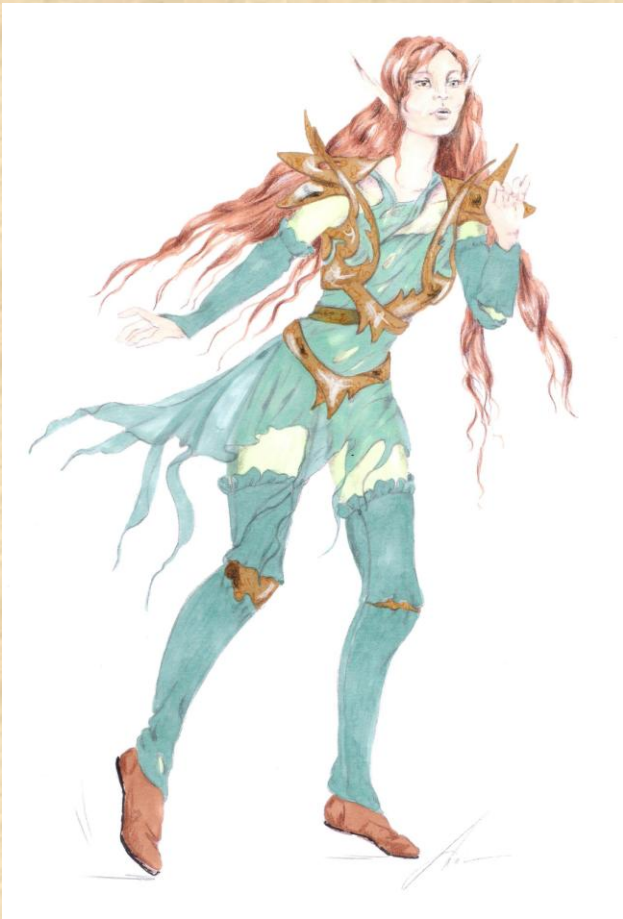
Messenger of Love



Messenger of Love



Tree Fairy



Tree Gnome



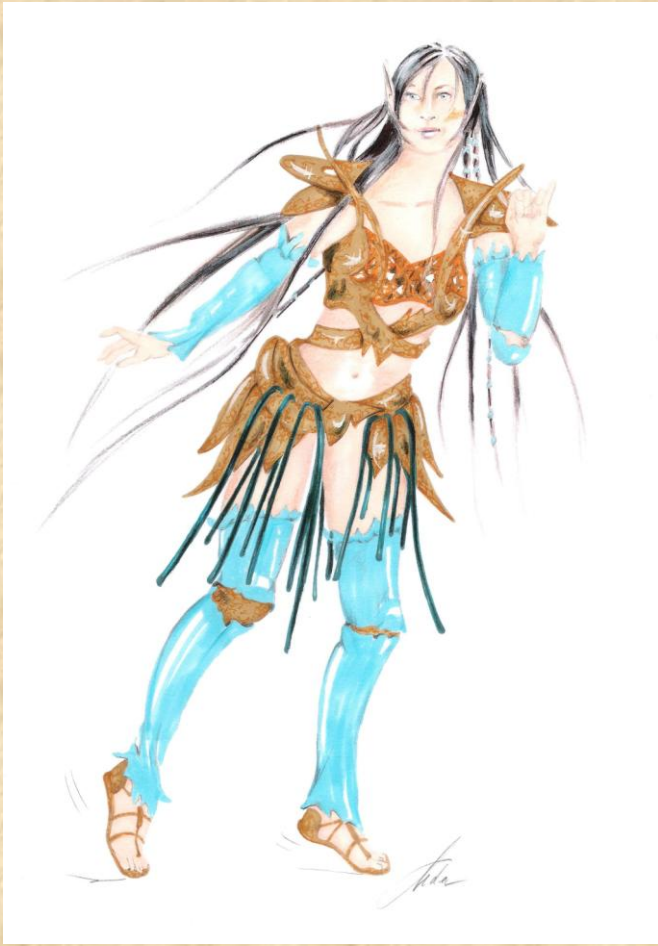
Eros Fairy



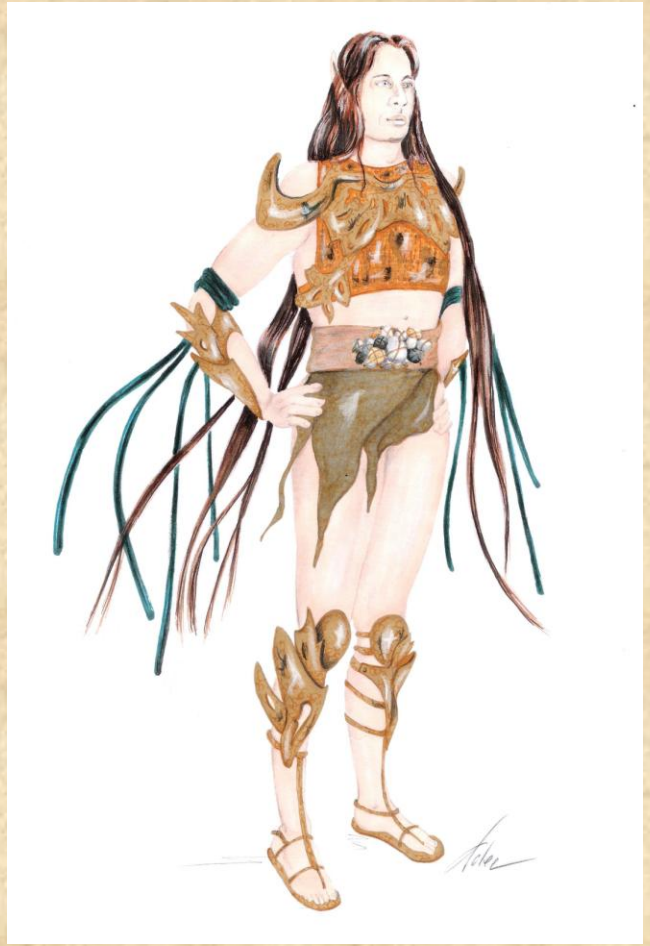
Eros Gnome



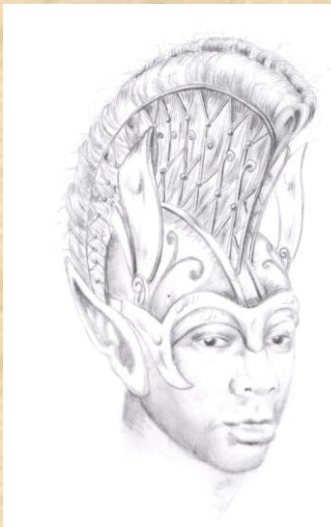
Water Fairy



Water Gnome



Warrior
Head Gear Design



Butterfly Costume
Leotard Fabric Print Design

F2 Butterfly Elf

FABRIC DESIGN
Leotard

A Ground Motif
Dimensions will be decided upon finalization of clothing pattern

Colour Shade Pattern
NOTA: The print finish are Colour Shades; no lines must be seen

Pantone Textile Colour Codes for Print

CANDY ROSE	15-2216	TP		
CANDY BLUE	14-4516	TP		
CANDY GREEN	14-5118	TP		
CANDY YELLOW	12-0804	TP		

B Relief Motif

10 - 12 cm

Colour Relief Motif

GOLD	15-0927	TP	
------	---------	----	--

 This block contains technical specifications for a butterfly costume leotard fabric print. It includes a small illustration of the leotard, a grid of diamond-shaped ground motifs, a color shade pattern with various pastel colors, and a relief motif of a butterfly. A scale bar indicates 10-12 cm. A color relief motif is also shown with a gold color code.